

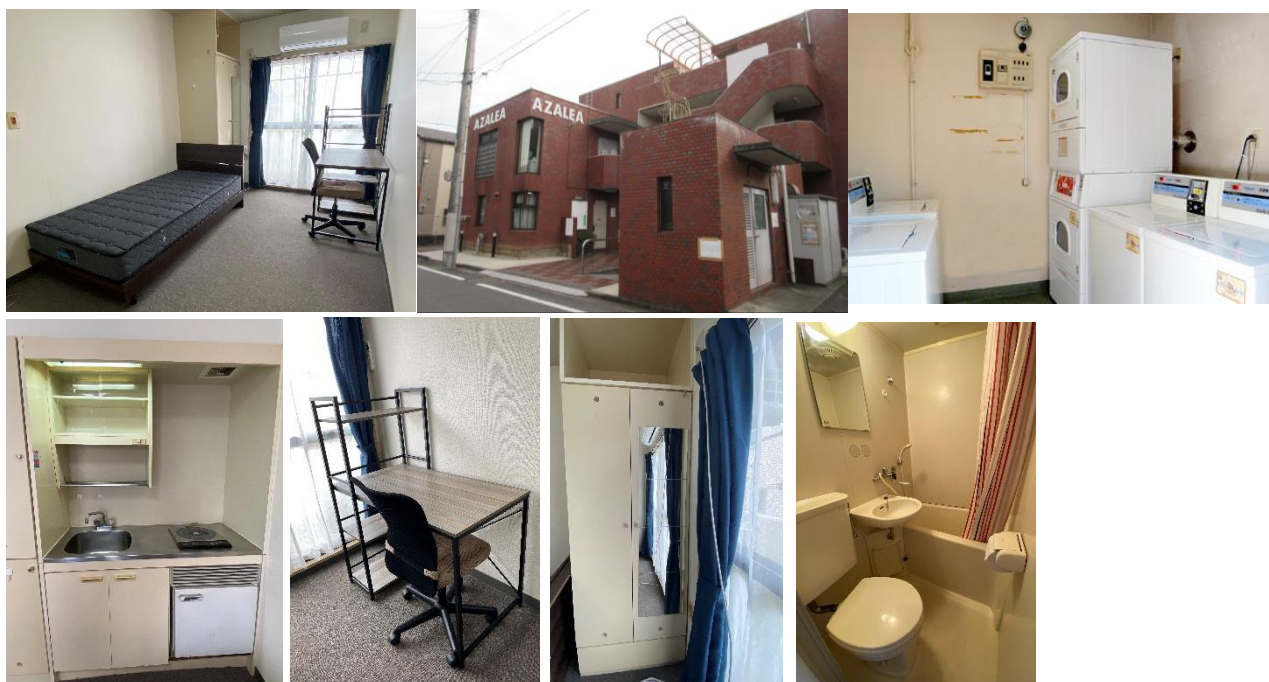
Dormitory information

●Azalea House— a private dormitory

Access: -10 minute-walk from Heiwadai Station(Tokyo Metro Fukutoshin Line / Tokyo Metro Yurakucho Line)
-approx. 30 minutes to GWC, by subway

URL: <http://www.azalea-house.com/>

Address: 3-10-18 Heiwadai, Nerima-ku, Tokyo 179-0083



>>We provide:

Wi-Fi
desk & chair
closet
refrigerator
mattress
sheets
mattress pad
air conditioner
IH cooking heater
curtain

>>Shared:

washing/drying machine
TV
microwave oven

>>>Pricing

washing machine: ¥200 per use
drying machine: ¥100 per use

>>We DO NOT provide

hair dryer
towels
toiletries
laundry detergent
clothes hanger
lamp
kitchen utensils
comforter
pillow

Dormitory information

●Kitazono Women's Student Dormitory— a private dormitory

Access: -12 minute-walk from Jujo Station (JR Saikyo Line)
-11 minute-walk from Itabashi Kuyakusho-mae (Toei Mita Line)
-approx. 40 minutes to GWC, by train

URL: <https://www.kitazono-j.co.jp/kitazono/>

Address: 2-6-1, Kaga, Itabashi-ku, Tokyo 173-0003



>>We provide:

Wi-Fi (Deposit required)

desk & chair

lamp

closet

refrigerator

bedding
(mattress, comforter, pillow, sheets)

air conditioner

IH cooking heater

clothes hanger

curtain

>>Shared:

washing/drying machine

tennis court

music room

study room

>>>Pricing

washing machine: ¥100 per use

drying machine: ¥100 per use

>>We DO NOT provide

hair dryer

towels

toiletries

laundry detergent

TV

microwave oven

kitchen utensils

Housing Charges

Accommodation	Rent	Rent after applying GWC housing grant	Remarks
Azalea House	25,000 yen/month (utilities not included)		Private rooms with bath and cooking facility. Payment method of utility fees: credit card.
Kitazono Women's Student Dormitory	89,000 yen/month (utilities of 7,000 yen per month included)	39,000 yen/month (utilities of 7,000 yen per month included)	Female only, private rooms with bath and cooking facility. Three meals are provided at the dormitory's cafeteria. (extra cost) Curfew is set at 24:00. The entrance door opens at 6:00 and closes at 23:00. You have to pay yourself insurance (household contents insurance) of 6,250 yen for the first month only.

*Those who receive a scholarship of 100,000 yen/month or higher are not eligible for the grant.

【NOTE】

Please note that we may NOT be able to offer accommodation you want to enter due to availability.
If you will be approved to extend your study period during the exchange program, you will need to move to another dormitory.